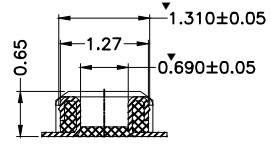
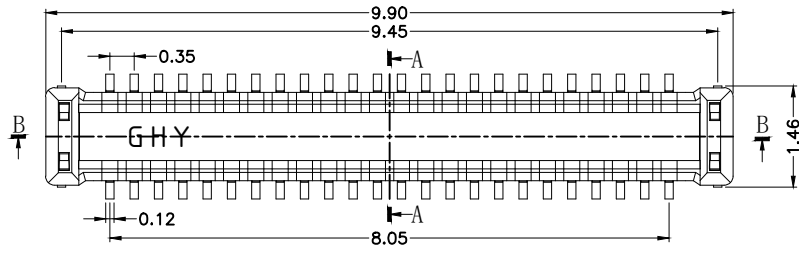
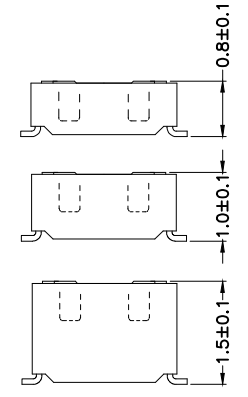
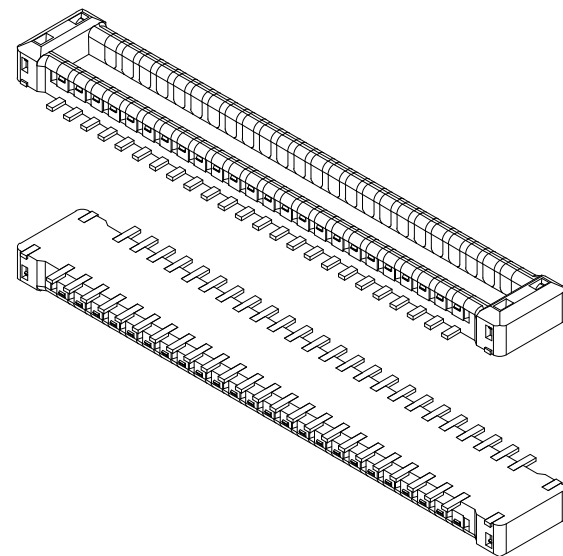


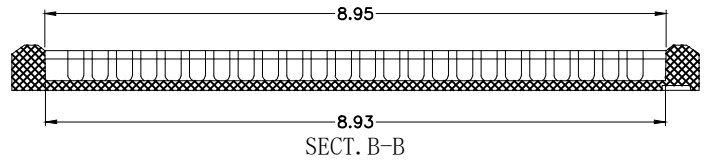
版本	变更日期	变更内容	责任人	备注
B	2023.02.15	扩pin,增加24pin和40pin	Liuzheng	



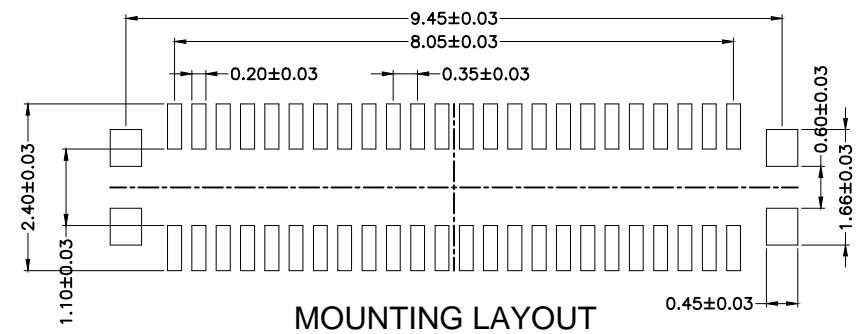
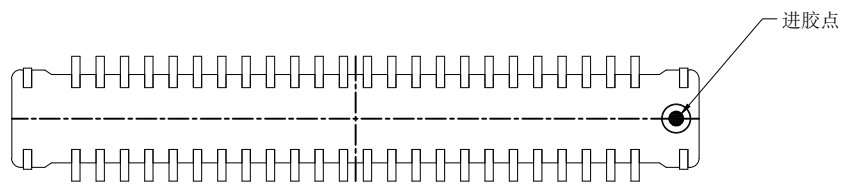
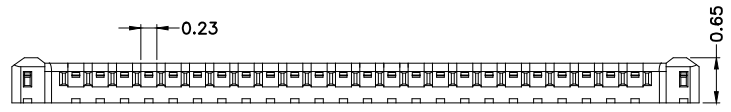
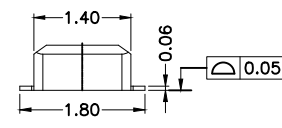
SECT. A-A



嵌合状态  
MATING CONDITION  
(嵌合高度0.8/1.0/1.5mm共用)

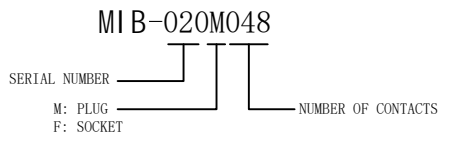


SECT. B-B



MOUNTING LAYOUT

- 备注:
1. 塑胶材质: LCP UL 94V-0 BLACK;
  2. 毛边最大0.03mm, 厚0.05mm;
  3. 产品不可有明显的缩水, 烧焦, 发白, 缺胶, 端子包胶等问题;
  4. 零件必须符合RoHS要求;
  5. ▼符号为QIP管控尺寸;
  6. 模穴号 (A, B, C.....);
  7. 中转收料10K PCS/盘;
  8. 产品几何中心位置不能设顶出位;
  9. 端子接地片共面度在0.05mm以内, 正位度0.02mm以内;
  10. 进胶口采用底部细水口进胶;



PIN数	A	B	C	D	E
48	9.90	9.45	8.05	9.45	8.05
40	8.50	8.05	6.65	8.05	6.65
24	5.70	5.25	3.85	5.25	3.85

X,±	X°,±	UNITS mm	NAME<INTENDED USE>	东莞市铭标电子科技有限公司
.X± 0.05	.X°± 1°	MAT'L	PART NO.<INTENDED USE>	
.XX± 0.02	.XX°± 0.5°	N/A	APPD:	TITLE: I/M
.XXX± 0.015	.XXX°±	FINISH N/A	Q'TY N/A	DWG NO.: MI B-020MXXX
THE GENERATED DRAWING IS BY ACAD, PROE OR IDEAS.DO NOT CHANGE BY HAND.			CHKD:	
			DR:	
				SCALE 1:1
				SHEET 1/1
				REV. B